

Sickness / Infectious Diseases

Repromed is committed to providing a safe and transparent service for all clients. It is important that you are well informed about the potential risks and effects of illnesses and infectious diseases.

COLD AND FLU-LIKE SYMPTOMS

To keep our clinic running smoothly, please do not visit if you have cold or flu-like symptoms. This includes a runny nose, sore throat, headache, fatigue, sneezing, persistent cough, hoarse voice, chills, muscle aches, fever, dizziness, altered smell, sore eyes, chest pain and swollen glands. If you have any of the above symptoms, please contact the Repromed nurses immediately and you will be advised of the next steps.

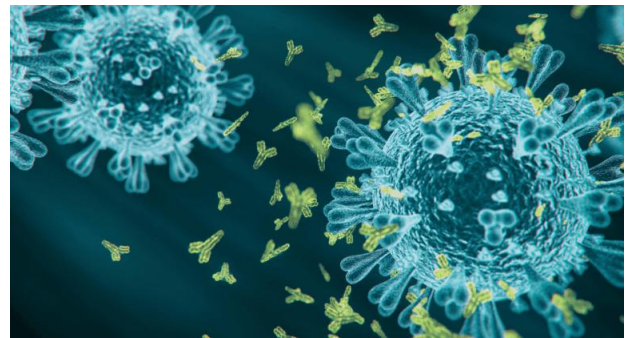
OUR SHARED RESPONSIBILITY

Maintaining a healthy clinical environment is a shared responsibility. Your honesty and cooperation help us protect everyone's well-being and ensure continuity for all clients.

If you have any questions or concerns, please don't hesitate to get in touch with our team. We are here to support you.

COVID-19

COVID-19 remains a public health concern and at Repromed, we are committed to keeping everyone safe and protected while continuing to provide fertility services.



POSITIVE COVID RESULTS AND CLOSE CONTACTS

If you have a positive COVID result, your cycle will be cancelled. If someone in your household tests positive, please call the nurses to discuss the situation. For cancelled cycles, a refund proportional to the stage of your cycle will be given.

MORE INFORMATION

For information on COVID-19 vaccine safety leading up to and during pregnancy, refer to <https://www.repromed.co.nz/news-and-stories/>.

For further information, refer to the guidelines published by <https://www.rcog.org.uk/guidance/corona-virus-covid-19-pregnancy-and-women-s-health/> and https://ranzocg.edu.au/news/?news_category=covid-19



Zika Virus

Zika virus is mainly passed on to humans by mosquito bites in many countries outside of New Zealand. It can also be passed on from pregnant people to the fetus, and through sexual contact as it is present in the semen of infected people.

WHAT ARE THE SYMPTOMS?

The symptoms are flu-like, and include low-grade fevers, rash, muscle and joint pain, and conjunctivitis. Many people may not know they have been infected.

WHY IS IT DANGEROUS?

Although the disease itself is often mild, infection during pregnancy can cause serious birth defects. In 5-15% of women infected with Zika, it has been linked to the birth of babies with a brain defect called microcephaly (smaller than normal head).

WHICH COUNTRIES HAVE RISK OF ZIKA?

Outbreaks have been reported in Africa, the Americas and Asia. Increasing spread has been noted in the Pacific Islands including Fiji, Tonga, and Samoa.

WHAT IF I HAVE VISITED ONE OF THESE COUNTRIES?

Based on the available guidelines the following recommendations are present for couples planning a pregnancy who are returning from high-risk areas. This includes symptomatic and asymptomatic individuals:

| Individual who travelled to a high-risk area | Length of time from individual's symptoms onset or last possible Zika virus exposure to use condoms or abstain from sex |
|----------------------------------------------|-------------------------------------------------------------------------------------------------------------------------|
| Female partner only | 8 weeks |
| Male partner only | 3 months |
| Both partners in the couple | 3 months |



TRAVELLING TO COUNTRIES WITH ZIKA RISK

Because of uncertainty about the safe period, our specialists advise clients to use condoms or abstain from sex if they are planning to conceive in the next 3 months and will be visiting an affected country during that time.

Talk to our staff about other measures such as delaying treatment or freezing semen before you visit these countries.

WHAT ARE REPROMEDS GUIDELINES FOR EGG AND SPERM DONORS?

If you are planning to donate eggs or sperm and have been bitten by a mosquito from a Zika virus area or have symptoms, you will unfortunately not be eligible to donate.

If you have visited an affected region but have no bites or symptoms, you will be required to delay your donation for 6 months.

MORE INFORMATION

For a Zika risk map go to: <https://www.cdc.gov/zika/geo/index.html>

Te Whatu Ora Website:

<https://www.tewhātuora.govt.nz/for-health-professionals/clinical-guidance/diseases-and-conditions/zika-virus#zika-virus-pregnancy-information-for-health-professionals>